

**T3**  
SYSTEMS

T3  
**LITEBOX**

PRODUCT BROCHURE - V2



**T3**  
SYSTEMS

Designed and Produced by  
**TECNA DISPLAY LTD**

# T3 LITEBOX

*THE T3 LITEBOX SETS A SHINING EXAMPLE IN ILLUMINATED FEATURES AND DISPLAYS.*

In the exhibition, retail and display industry, speed and accuracy are highly important. The T3Litebox range is simple to assemble, modular in design and lightweight. They can be efficiently transported in specifically designed bags and built by only one person.

Create vibrant displays that drive foot fall, engage brand awareness and generate conversations with your target audience.

The entire T3 Litebox range requires no tools during installation and dismantling. Simply...

## TWIST LOCK & CONNECT

**T3**  
SYSTEMS



### KEY FEATURES

- DESIGNED WITH THE T3 FRAME AND T3 AFFINITY
- QUICK ASSEMBLY AND INSTALLATION WITHOUT TOOLS OR LEVERS
- FREE STANDING, WALL MOUNTED AND SUSPENDED CONFIGURATIONS
- MODULAR DESIGN FOR EASY STORAGE AND TRANSPORTATION
- EASY MOUNTING AND CHANGING OF GRAPHICS
- MULTIPLE SIZES AND VARIATIONS TO FIT YOUR DISPLAY NEEDS

# STANDALONE

## CREATE VERSATILE AND EFFECTIVE VISUAL PRESENTATIONS WITH OUR FREE-STANDING T3 LITEBOXES.

Our T3 Litebox profiles can be cut to custom lengths, allowing for standalone lightboxes of varied dimensions, maximising on the event space provided. Our T3 Liteboxes come with two support options; End side plates (ESP) and T3 Affinity base plates.

### T3 AFFINITY PLATE

CODE: AYA2004

Allows for increased strength and rigidity, as well as the use of multiple retro fit display accessories. These include shelving units, tablets, monitors



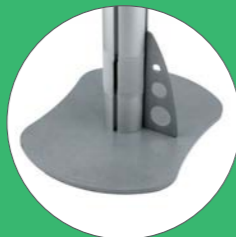
### END SIDE PLATE CODE: ESP

The side plates are securely attached using threaded bolts. This compact design reduces build time and facilitates transport and storage requirements.



### RIGIDIZER CODE: AYA4020

Fits in the channel of the post and connector while sitting on top of the flat foot. Adding these to your T3 Litebox will create a more stable structure.



MODULAR COMPONENTS



COMPACT CASES & BAGS



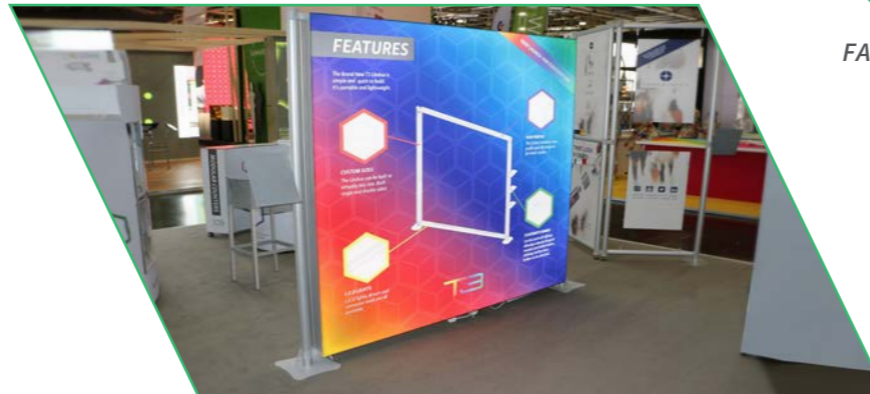
FAST BUILD TIMES



NO TOOL ASSEMBLY



CUSTOMIZABLE



## i INFO

T3 Affinity lightboxes can be fitted with literature racks and monitors.



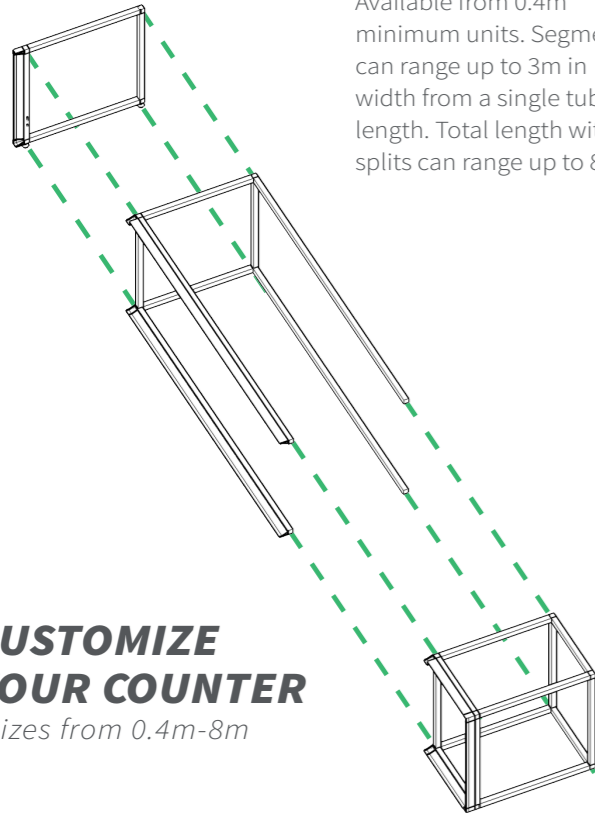
# BARS & COUNTERS

## IDEAL FOR RETAIL AND P.O.S APPLICATIONS.

Providing a broad range of structures and display units, including bars and counters. Due to its rigid and sturdy frame, various counter tops can be applied to create customer interaction areas and presentation spaces.

### CUSTOM COUNTERS

Available from 0.4m minimum units. Segments can range up to 3m in width from a single tube length. Total length with splits can range up to 8m\*.



## CUSTOMIZE YOUR COUNTER

\*Sizes from 0.4m-8m



### WHEELS

CODE: FWB50

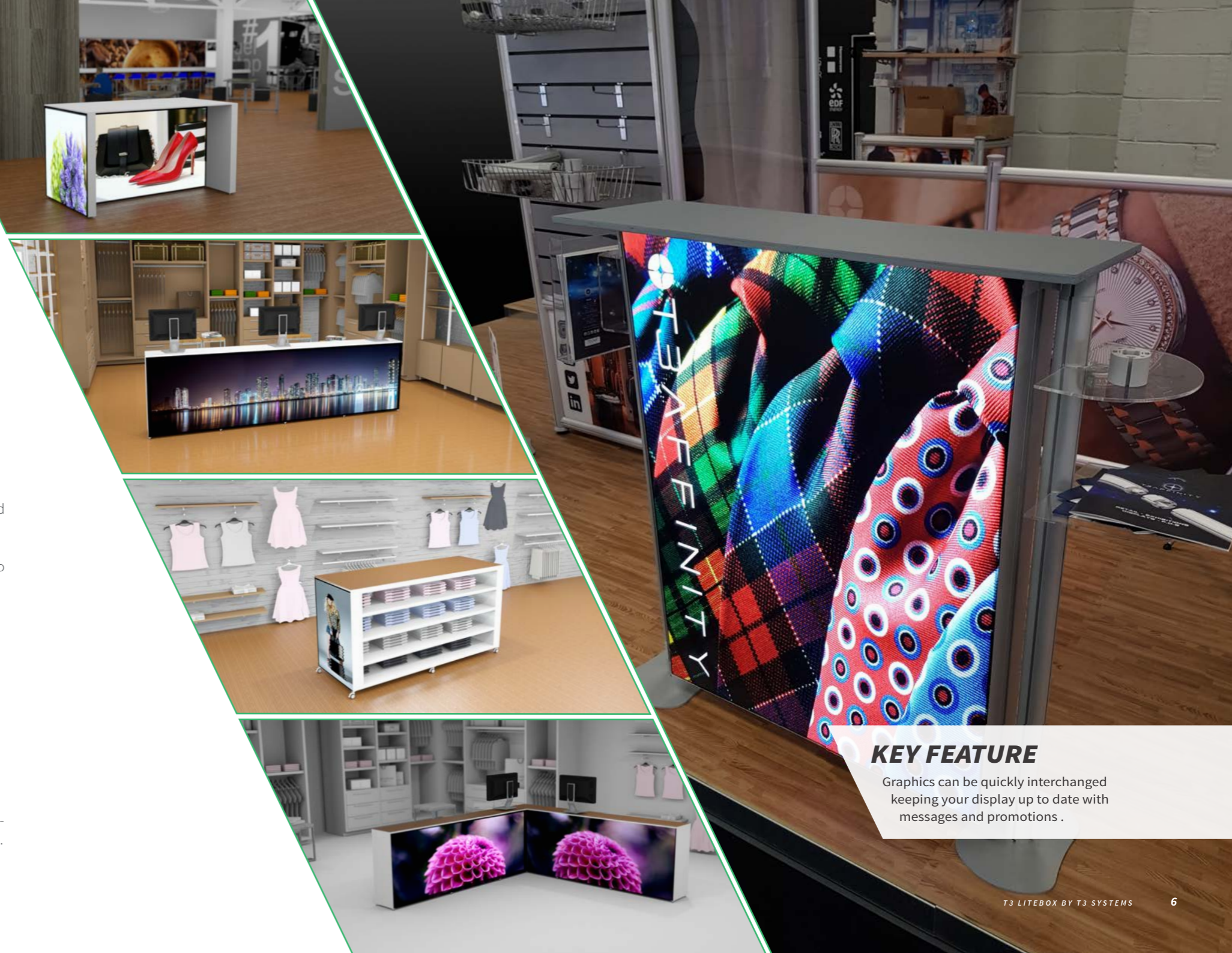
Structures can be moved quickly and easily by simply rolling the unit. Lockable wheels are also available.



### STATIC FEET

CODE: FA38S

A solution for rigid semi-permanent display uses.



## KEY FEATURE

Graphics can be quickly interchanged keeping your display up to date with messages and promotions.

# CLASSICS

## CAPITALISE ON OUR MOST SUCCESSFUL CONFIGURATIONS.

The following three products have been designed to get the best results from the T3 Litebox range. All three options can be provided with ESP or T3 Affinity supports.



### T3 ROLLER BAGS CODE: CBR

All our standalone and standard T3 Litebox displays can be packed into our compact, T3 Roller Bag.



### COUNTER

This standardised counter provides an eye-catching display unit for information points, POS units and event registration. Dimensions 1m x 1.2m



### 1 METRE

The 1 metre T3 Litebox is designed with split profiles below 1200mm improving storage and transport requirements. Dimensions 1m x 2,2m



### 2 METRE

The 2 metre Litebox is a cost effective solution with a focus on simple installation by using full length profiles. Dimensions 2m x 2.2m

# ACCESSORIES

Kit out your T3 Litebox with our range of versatile display accessories. View our Catalogue for more options.

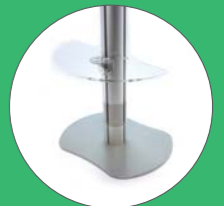
### LITERATURE HOLDER

CODE: AYA5002  
A4 size, includes a left and right option.



### ACRYLIC SHELF

CODE: AYA5003  
Various sizes and configurations



### TABLET MOUNT

CODE: AYA5013  
All sizes of tablets can be fitted



### MONITOR MOUNT

CODE: AYA5012  
Screens up to 32" can be fitted



# MOUNTED FRAMES

## CREATING MOUNTED LIGHTBOXES HAS NEVER BEEN EASIER.

Mounting T3 Liteboxes is an ideal way to save event floor space by creating illuminated shell scheme walls. The T3 Litebox extrusion is fitted on one side of the T3 Frame, allowing for displays to be mounted flush to any surface.

### SHELLKIT CLAMP CODE: SHCLMP

Our T3 shell kit clamps allow you to mount your T3 Litebox onto any frame or surface. They can be connected to a variety of exhibition systems offering seamless versatility.



## HOW TO ATTACH

1. Position the rear screw with the wheel.

2. Align the bolt into the required orientation.

3. Align the rear bolt into the profile.

4. Use the hand wheel screw to attach the Litebox frame.



## KEY FEATURE

Using the T3 Shell clamp, Liteboxes can be mounted onto multiple surfaces and adjusted with ease.

# CUSTOM

## THE ABILITY TO CREATE ANY SIZE OF LIGHTBOX.

T3 Litebox profiles can be cut to any length from 0.4m to 3m in length. Our twist and lock assembly means that all T3 Liteboxes are easy to transport, store and simple to assemble without the use of tools.

## UNLIMITED DESIGN POTENTIAL

Why not integrate a T3 Litebox into other dynamic concepts, create full exhibition stands and displays.

### SILICON EDGING

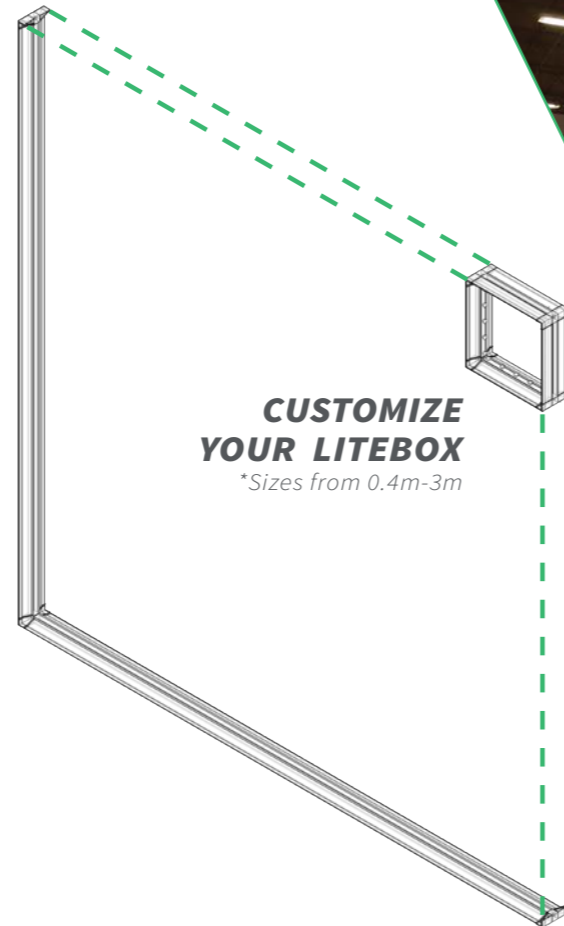
The silicon edging of your textile graphics fits neatly and securely into our Litebox profile.



LED ILLUMINATION



LIGHT WEIGHT



## CUSTOMIZE YOUR LITEBOX

\*Sizes from 0.4m-3m

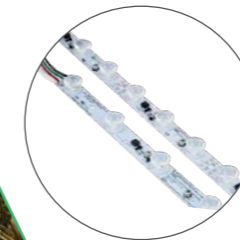
# D.I.Y

## TAKE THE CREATION OF T3 LITEBOXES INTO YOUR OWN HANDS.

All our parts and accessories can be bought in stock lengths allowing you to take control of production. Profiles and extrusions can be bought in 2.4m lengths, as well as the corner and edge infills. This offers complete product flexibility.

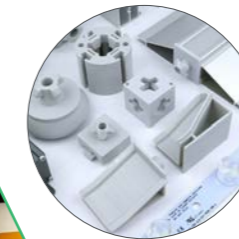
## HELP IS A PHONE CALL AWAY

T3 Systems will provide you with all the production advice you need when creating your own T3 Liteboxes.



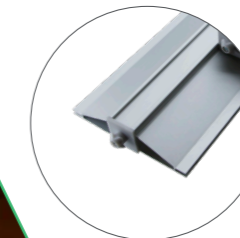
### L.E.D STICK LIGHTS

Available in two types: 5 and 9 bulb LED Stick Lights. These can be bought in bulk quantities.



### END FITTINGS/INFILLS

Various End Fittings and litebox infills are available to be purchased in stock quantities.



### EXTRUSIONS

All our Extrusions are available for purchase in stock lengths up to 3m.

## i INFO

All Liteboxes can be designed with split frames allowing for better storage and transportation.

# USAGE

## CREATING MULTIPLE TYPES OF DISPLAYS FROM ONE SIMPLE PRODUCT.

From retail to exhibition venues, the T3 Litebox system allows for quick and easy installation into all locations. It also provides you with multiple configurations to fit your design requirements. The optional extra of retrofit accessories also provides a unique display bonus. It provides unlimited design potential while remaining simple to transport and install. Staying true to our Twist, Lock & Connect philosophy

### RESTAURANTS & HOTELS

Not only is the T3 Litebox a beautiful source of light but it can also create a unique visual escape for your guests. Ideal for private events i.e conferences, weddings and corporate events.

### PUBLIC AREAS

With benefits such as quick installation and multiple configurations, means the T3 Litebox can be used perfectly in public areas. Information desks, walk ways and signage are all ideal uses for the T3 Litebox.

### INTERIORS & FITTINGS

The customisable sizes allows for offices, living rooms and meeting areas to benefit from ambient and inviting Litebox displays for families and employees alike.

### RETAIL

Set optical highlights, create impressive rooms and shopping experiences. The fabric graphics are easy to change and will enable you to keep current with sales messages and promotions.

### EXHIBITION & DISPLAYS

Differentiate your stand from your competitors. Our multiple configurations allow you to maximise on space as well as heighten your visual messages to target audiences.



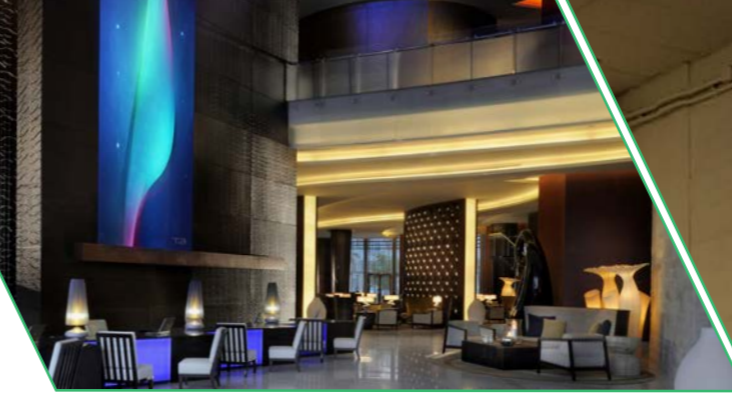
### LED LIGHT STRIPS

The LED lights provided come in two sizes to match your design specifications



### TEXTILE GRAPHICS

The textile graphics allow for easy installation and alteration



## i INFO

Litebox frames can be quickly altered into different orientations.



## KEY FEATURE

From hotel to museum interiors, T3 Litebox can be used to enhance your displays with bright graphics and multimedia driven accessories.





**T3**  
SYSTEMS

## GET IN TOUCH



### EMAIL

[sales@tecnadisplay.com](mailto:sales@tecnadisplay.com)



### CALL

UK OFFICE: +44 (0)208 803 4469

USA OFFICE: +1 (310) 299-2789



[WWW.T3SYSTEMS.COM](http://WWW.T3SYSTEMS.COM)



**T3**  
SYSTEMS

